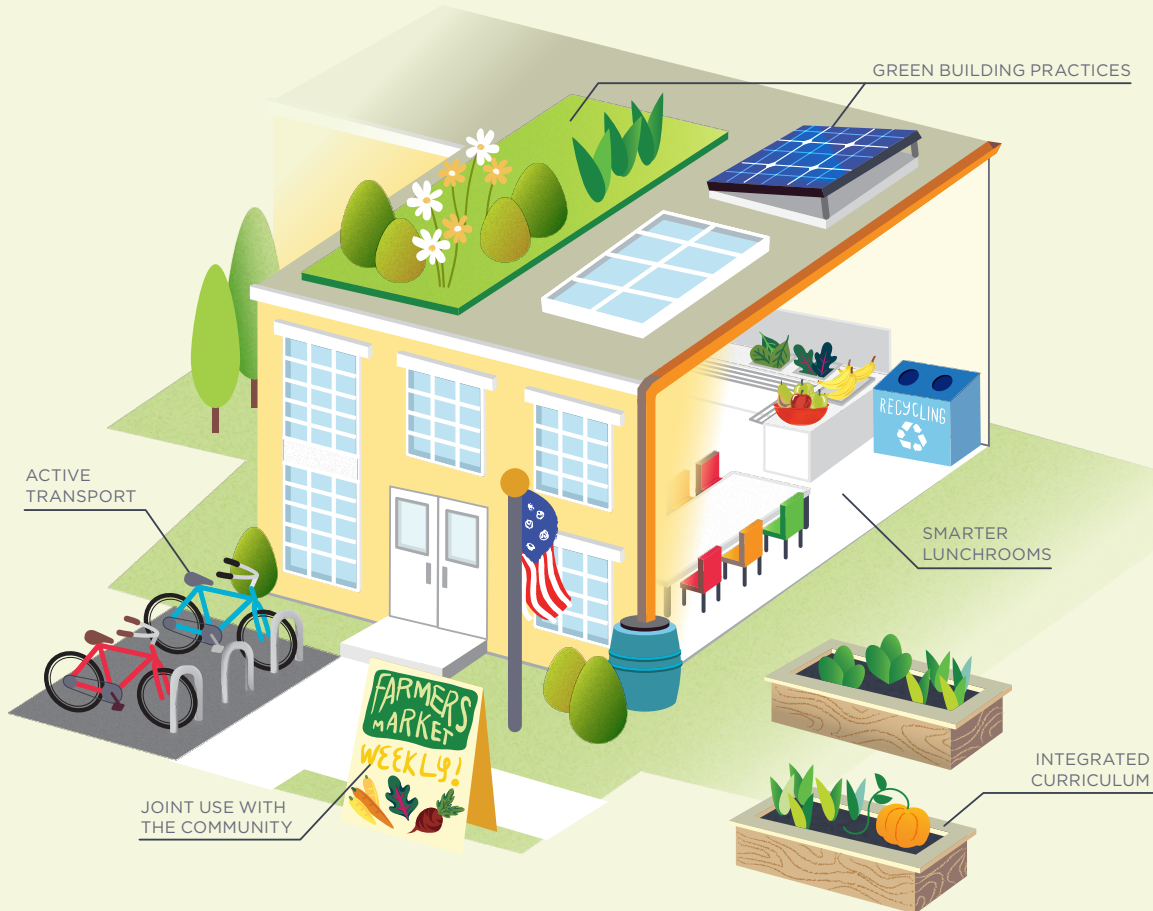


# PUBLIC HEALTH *and* GREEN BUILDING INFOGRAPHIC SERIES

2

## FOCUS ON CREATING GREEN AND HEALTHY SCHOOL ENVIRONMENTS

Schools are critical community resources and ideal environments to advance public health and sustainability goals. How we design our schools has a big impact.



3

## INVESTIGATE HEALTH IMPACTS OF THE BUILT ENVIRONMENT AT MULTIPLE SPATIAL SCALES

The built environment that affects our health operates at many different levels, from rooms to buildings to outside landscapes to neighborhoods and even beyond, to cities and regions. More research is needed at each of these spatial scales.

May 2013

This infographic is part of a series that highlights seven recommended green health strategies to help improve our built environments and combat childhood obesity. Please view the full infographic at [www.nccor.org/projects/greenhealth/infographic-gh.php](http://www.nccor.org/projects/greenhealth/infographic-gh.php)



WWW.NCCOR.ORG